



Shaler Area School District

SCOTT PRIMARY SCHOOL



April 12, 2018



Metal Roofing Continues



Massaro
CM SERVICES, LLC



Loading Dock Ramp Poured



Massaro
CM SERVICES, LLC



West Entry



Massaro
CM SERVICES, LLC



Chiller Pad Prepped & Poured



Massaro
CM SERVICES, LLC



Gymnasium Floor Prepped



Massaro
CM SERVICES, LLC



Drywall Continues @ Administration



Massaro
CM SERVICES, LLC



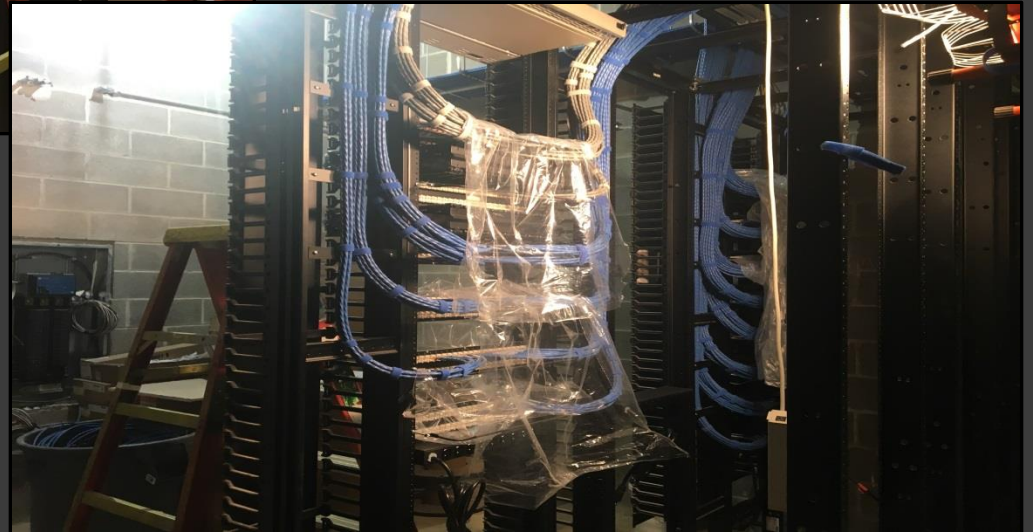
Framing Continues In Areas C&D



Massaro
CM SERVICES, LLC



Technology & Data System



Massaro
CM SERVICES, LLC



Technology Devices Being Installed



Massaro
CM SERVICES, LLC



Fire Alarm Devices Being Installed



Massaro
CM SERVICES, LLC



Finishes Continue



Massaro
CM SERVICES, LLC



Finishes Continue





Plumbing Fixtures Installed



Massaro
CM SERVICES, LLC



We've Moved into the Building



Massaro
CM SERVICES, LLC



North Elevation View

April 12, 2018



Massaro
CM SERVICES, LLC



South Elevation View

April 12, 2018



Massaro
CM SERVICES, LLC



Pull Planning

Week of April 09, 2018

PRIME	MON.	TUES.	WED.	THUR.	FRI.	WEEKLY GOALS WEEK ENDING
A-1 SARGENT	<ul style="list-style-type: none"> - GRF O.V. DWGS - KITCHEN R.I. - CASSETTE TRAY IN C - 3 SHOPS IN BOWLING ROOM (3000, 3000, 3000) 				<ul style="list-style-type: none"> - ON PWS G&C - CABLE TRAY IN C 	BEGIN 3 WORK ROOMS
NELLO	<ul style="list-style-type: none"> - CTR. TRAY IN BOWLING ROOM - CHAIR PAD - RAILING SCAM - CHAIRS BOTT - RAILING SCAM @ ENTRANCE - TIE IN R. RAILING A/B - RAIL IN R. RAILING A/B 		<ul style="list-style-type: none"> - WEST LOT SITE WORK - GRF FLOORING T&S 	<ul style="list-style-type: none"> - GYM DOOR - DEMO 	<ul style="list-style-type: none"> - FENCE FOR V#1 	<ul style="list-style-type: none"> - CABLE LAD G&C - GYM DOOR - DEMO FENCE @ SECT #1 - 10 CANDY @ IMPROVED - WORK LOT SITE WORK REMAIN - RAIL VENDING @ ENTRANCES COMPLETE
RAM	<ul style="list-style-type: none"> - C COORDINATOR BULKHEADS - ADDITION A/B - CAFE ENTRANCE EASTERS - CAFE BULKHEADS - TIE LIBRARY 		<ul style="list-style-type: none"> - RESUME GRID 10 R A/B 			<ul style="list-style-type: none"> - CAFE ENTRANCE R&G - RESUME G&C - RAIL A/B
HARRIS		<ul style="list-style-type: none"> - ELEVATOR DOOR SINGS - CRU WALLS G&C 				
VABEL	<ul style="list-style-type: none"> - TIE IN A/B - AREA C/D R.I. - SPARKER HEADS 				<ul style="list-style-type: none"> - PULL TRAILER 	<ul style="list-style-type: none"> - CONT. TIE IN - PULL TRAILER
HRANEC	<ul style="list-style-type: none"> - CAFE/KITCHEN DUCT - MEZZ DUCT 	<ul style="list-style-type: none"> - #1 & 2 DROP - BR. FL. RESUMES COORDINATOR 	<ul style="list-style-type: none"> - TUBE THRU ROOF 	<ul style="list-style-type: none"> - MEZZ DUCT 		<ul style="list-style-type: none"> - FIVE PIPE THRU ROOF - KITCHEN/CAFE DUCT COMPLETE
EAST WEST	<ul style="list-style-type: none"> - DATA ROOM UNIT 	<ul style="list-style-type: none"> - VAY'S C/D 	<ul style="list-style-type: none"> - RAD PANELS 			<ul style="list-style-type: none"> - BEGIN RAD PANELS





NEW PRIMARY SCHOOL ON SCOTT AVE.

Scheduled Work for Upcoming Weeks

- Continue MEP Systems
- Interior CMU
- Interior Drywall
- Interior Ceramic
- Interior Painting
- Roofing